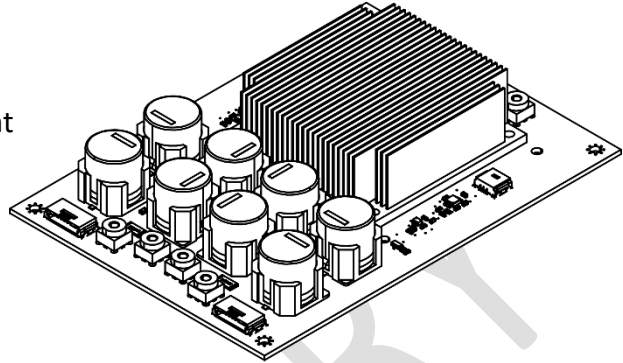


OSA ELECTRONICS ADC824MP NON-ISOLATED AC/DC RECTIFIER MODULE 48V/20A

Features

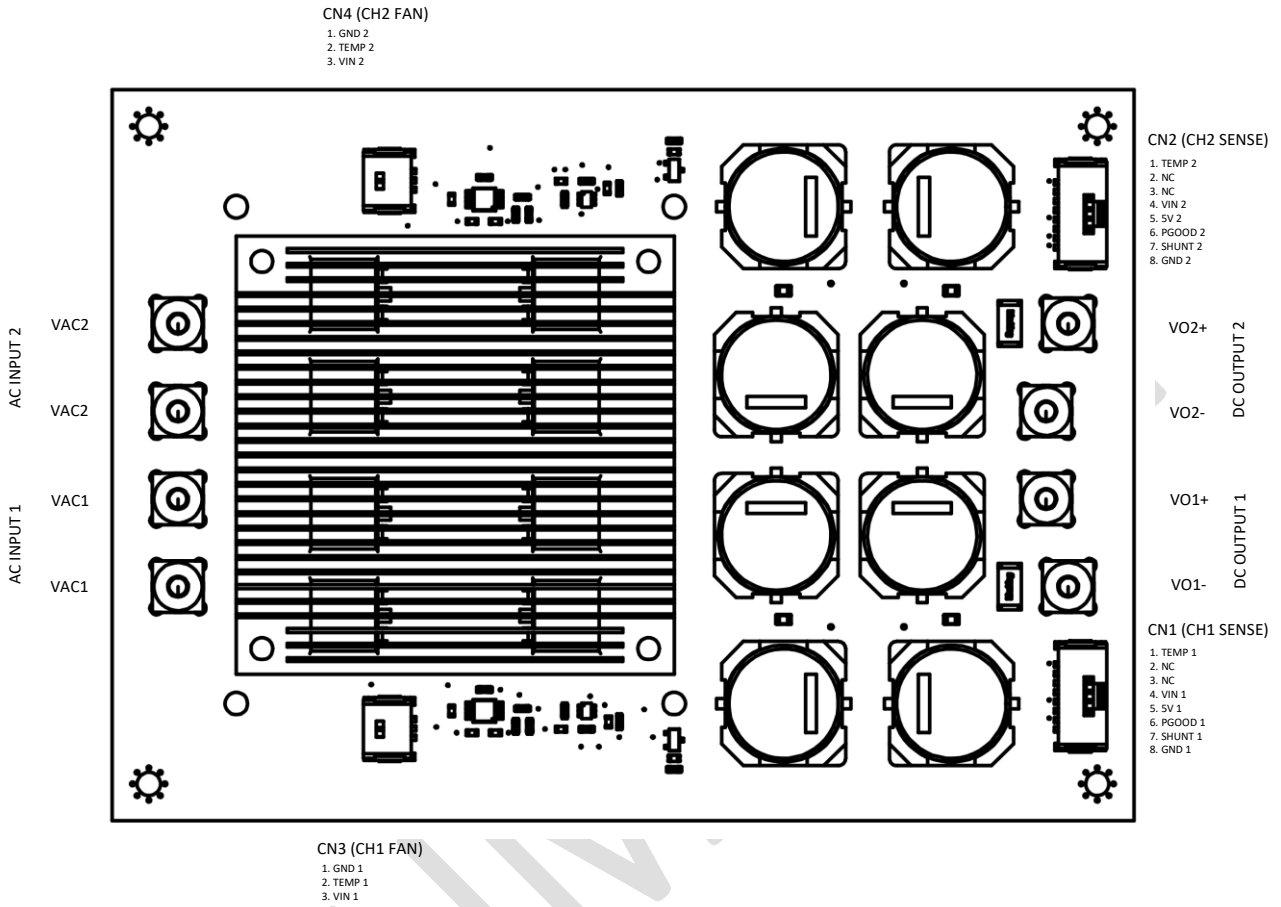
- 2.5 to 48VAC, 50/60Hz
- 9ns Ultra-Fast Rectifiers
- Onboard temp. controller and load current measurement per channel
- Onboard FAN controller (optional)
- Power Good signal
- RC and LC Input / Output Filtering
- Industrial, Medical and Military models



Specifications		
Model		ADC824MP
Input voltage	V_{AC}	2.5 to 48VAC, 50/60Hz
Output voltage	V_{DC}	2.5 to 48VDC
Rated current	A	20A @60 °C MAX.
Operating Temp. Range	°C	-40 to +100°C
Storage Temperature	°C	-55 to +125°C
Humidity (non condensing)	%RH	Operating: 10 - 97% RH
Vibration	-	10-55Hz Amplitude (sweep for 1 min), <2G X, Y, Z 1 hour each
Shock	-	<20G
Withstand Voltage	-	Input to Output: 4kVAC, Input to Chassis: 2.5kVAC for 1 minute
Isolation Resistance	-	>100M at 500VDC @ 25C & 70%RH for 1 minute
Weight	g	190g
Size WxHxD	mm	140 x 100 x 30 mm
Warranty	yrs	Two years



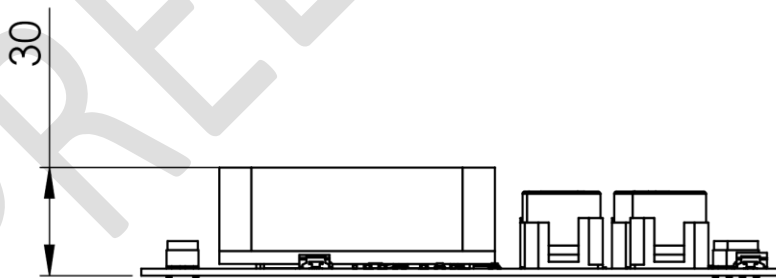
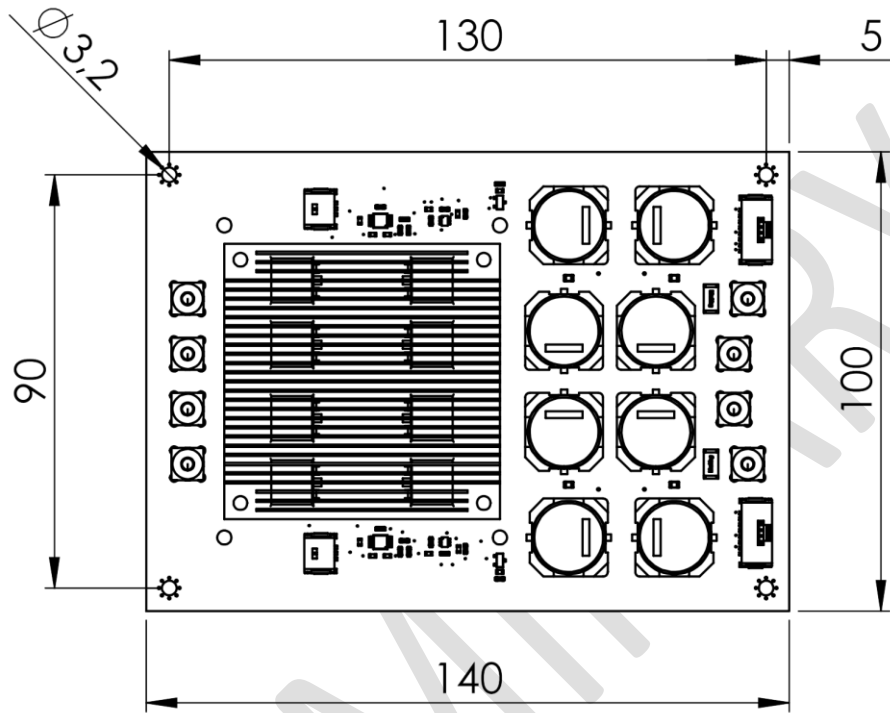
Wiring Diagram



- Recommended terminals: TE Connectivity 165295
- Recommended wire: 18AWG CNC TECH 3099-18-1-0500-001-1-TS
- Recommended screws: M3 x4mm Pan Head
- Recommended 8 PIN Conn.: TE Connectivity 474833-E or 484083-E
- Recommended 3 PIN Conn.: TE Connectivity 384841-E

Drawing

- ADC824MP



*All dimensions in mm